

Slow Lorises

An endangered species living in Southeast Asia

Pericles Wang

November 5th 2020

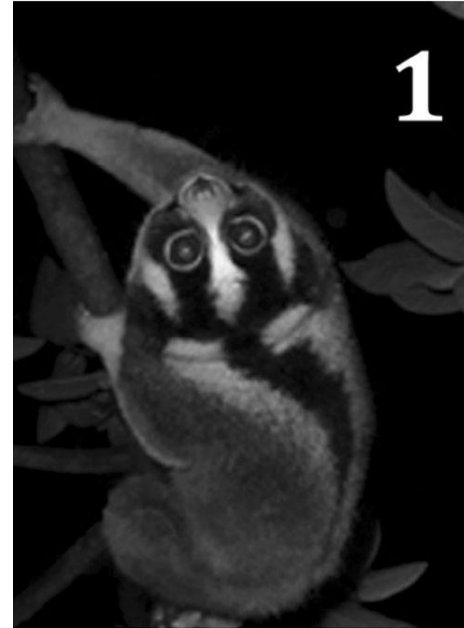
Introduction

- Habitat
 - bamboo forests
 - evergreen forests
 - rainforests
- Omnivores
 - insects and tree gum
 - a long tongue to drink nectar
- Nocturnal
 - A reflective layer on their eyes to see in the dark
- Solitary



Mimicry

- Slow Loris mimic Cobras
 - They have several more vertebrae to help them
- Sway around to mimic a Cobras slithering
 - With pants and grunts
- Mimic Cobra hissing
 - With pants and grunts
- Unique fur pattern
 - It looks like a Cobra hood
 - They also have a long stripe



Venom



- Slow Lorises produce venom with a few steps
 - They fill their mouth with secretions from their branchial gland
 - They mix the secretions with saliva
- Slow Lorises use venom to hunt
- Slow Lorises rub themselves with venom
 - To protect them from harmful things
- They use it for self defense
 - They can easily make their venom in a cobra stance then attack
- The Venom can be dangerous
 - Like when George Mandani Developed an anaphylactic reaction



Life Cycle

- Slow Lorises are dioecious and produce all year
- Mating takes 3 to 7 minutes
 - There is a 6 month gestation period
- Female usually have 2 babies
 - One baby is usually smaller than the other
 - This baby usually dies of sickness
- Female has a 16 month span between each birth
- Babies are born fully developed
 - They are born with their eyes open and have the strength to hold on to branches
- Babies follow their mom everywhere except when looking for food
 - Mothers rub their babies in venom to protect them
- Babies are nursed for 6 months
 - They can eat solid meat in 4 months
- In less than a year babies can fend for themselves





Compare and Contrast

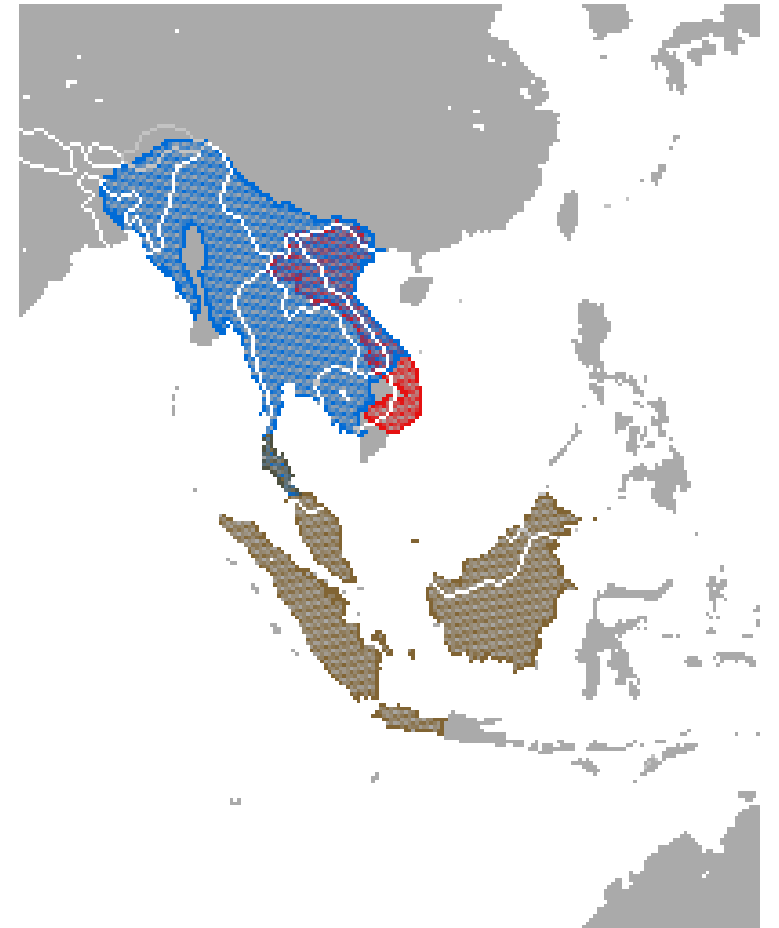
I am comparing and contrasting a slow Loris and a gorilla.



- Slow Lorises live alone and do not have a leader
- Slow Lorises have several more vertebrae
- Slow Lorises are Omnivores
- Slow Lorises spend most of their time in the trees
- Slow Lorises mimic cobras
- Slow Lorises live in Southeast Asia
- Both are primates
- Both are endangered
- Gorillas don't live alone and has a leader
- Slow Lorises have several more vertebrae
- Gorillas are Herbivories
- Gorillas spend most of their time on land
- Gorillas mimic humans
- Gorillas Live in Sub-Saharan Africa

Humans

- Slow Lorises are mistreated by humans
- Slow Lorises are used in the exotic pet trade
 - People pull out their front teeth so they cannot use their venom
 - People do not do this protect anyone but to make sure people buy Slow Lorises
- Slow Lorises habitats are fading
 - Human construction of roads, houses, and buildings
 - Agriculture
 - Pollution



Conclusion

- Slow Lorises are unique
- They keep insects and tree populations at a sustainable level
- We must protect these animals

References

- Oxford Brookes University. 2020 Slow loris facts. <https://www.brookes.ac.uk/>
- Bioweb. 2013 The slow loris. <http://bioweb.uwlax.edu/>
- Fessenden M. 2014 The Only Primate With a Toxic Bite Might Have Evolved to Mimic Cobras. <https://www.smithsonianmag.com/>
- Mongabay S. 2014 When cute turns deadly – the story of a wildlife biologist who was bit by a venomous slow loris, and lived to tell the tale. <https://news.mongabay.com/>